



rQPOD

REMOTE CONTROL SURVEYING PACKAGE

Tether-Free Data Collection

Enjoy safe, remote-controlled surveying with the rQPOD remote boat surveying package! The rQPOD is hardware that when installed on a floating platform, transforms it into a motorized vehicle for remote operation and collection of ADCP data.

The rQPOD package fits the SonTek RiverSurveyor-M9/S5 and HydroSurveyor-M9 ADCP, and comes with a Torrent Board V7 and the patent-pending motorized system.

The rQPOD Modular Remote Survey Boat is a lightweight, portable and affordable solution for conducting discharge measurements and/or hydrographic surveys. The rQPOD is ready to go wherever you need it.

Need bathymetric data? Upgrade your RiverSurveyor-M9 system to include the HydroSurveyor/HYPACK hydrographic software package for full surveying capability!



Package includes Torrent board, motorized attachment and handheld control system



a xylem brand

rQPOD FEATURES AND SPECIFICATIONS



rQPOD

Modular package with all required hardware to transform the Torrent Board V7 into a remote controlled boat.

Complete with wet-mateable connectors, battery and navigation lights, the rQPOD has everything you need to create a lightweight, easy-to-use remote boat.

Top Speed	5ft/s (1.5m/s)
Duration	4 to 6 hours ¹
Temperature range	14°F to 104°F (-10°C - +40°C)
Batteries	DJI Phantom 3 LiPO
Transmitter range	1,640ft (500m)
Transmitter make	Futaba T6K
IP rating	IP67

¹ at speed of 2.3ft/s (0.7m/s)



Torrent Board V7

The Torrent Board was developed in conjunction with a team of SonTek ADCP users to be deployed across a high range velocity conditions.

The board comes "rQPOD ready" with pre-drilled mounting holes and capped cable runs for snag-free connection to the thrusters.

Length	3.54ft (1.08m)
Width	2.13ft (0.65m)
Nose rocker	0.82ft (0.25m)
Weight incl. M9	21.6lbs (9.8kgs) ²
Weight excl. M9	10.4lbs (4.7kgs)
Transportation	Soft carry case with shoulder straps & storage pockets.

²26.5 lbs (12kgs) with rQPOD

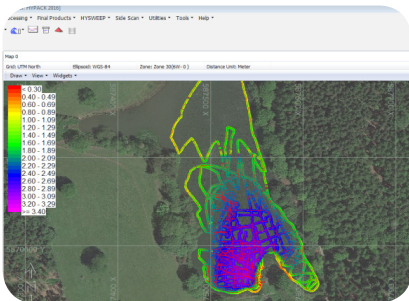


RiverSurveyor-M9/S5 and HydroSurveyor-M9

SonTek's RiverSurveyor-M9/S5 is a river discharge measurement system without the traditional limitations. Portable and easy to use, the patented and award-winning RiverSurveyor measures in extreme flood or drought situations within a single instrument, and without the need to change user settings.

The HydroSurveyor-M9 is a system that will provide both bathymetric mapping and velocity profiling, and includes HYPACK MAX[®] software.

The results speak for themselves - the RiverSurveyor and HydroSurveyor systems have revolutionized the way data is collected in rivers, streams, canals and lakes.



Software

RiverSurveyor LIVE with SmartPulseHD[®] contains intelligent algorithms that look at water depth, velocity and turbulence, and then adapts the acoustic pulse scheme to those conditions. See the clearest velocity picture possible with cell sizes down to 2cm!

HYPACK MAX[®] planning, acquisition, synchronization & processing: provides the tools necessary to design a survey, collect and process ADCP bathymetric data, calculate volume quantities, generate contours, and export data to XYZ, DXF, LAS, etc.



SonTek, a Xylem brand
 9940 Summers Ridge Road
 San Diego, CA 92121
 Tel +1 858.546.8327(US)
 inquiry@sontek.com



Quick access to the video and training resources you need at sontek.com/videos

SonTek, SmartPulseHD and HYPACK-MAX are trademarks of Xylem or one of its subsidiaries. All rights reserved.
 © 2019 Xylem. S28-01-0719