



ADK INSTRUMENTS
Where Technology Exists



SONAR





ADK INSTRUMENTS
Where Technology Exists

Setting Standards, Today And Tomorrow



We set new principles in client experience and aim to create future-ready products. We take great pride in our products, that reek of quality, and our industry-best personalized services.



We, at ADK Instruments, work on the most important things that an industrial enterprise needs, which include Industrial Measurement Tools. Our tools are designed with utmost precision, and are tested under rigorous conditions, in order to provide a one-stop, fuss-free solution to all our dear patrons.



All our products are meticulously crafted and manufactured, and that personal touch ensures that you never have to worry about the instrumental needs in your work domain.

ALL CATEGORIES



Air quality



Water Quality



Measuring Devices



Hydrology



Meteorology



Waste Water



Oceanography



Rugged Systems



Constructional Tools



Modems/Routers



Laboratory Technology



Personal Tracking

HIGH VALUES

Our Success is not only due to the quality of our work. It's down to attitude, our approach and the way we treat our clients.

Focus

We Have A 100% Commitment To Making All Our Sites The Best They Can Possible Be, No Matter What It Takes To Get There.

Passion

Our Desire To Produce Good Work Runs Deep- That's What Lets Us Handle Every Project With Fresh Energy And Enthusiasm.

Empathy

Our Desire To Produce Good Work Runs Deep- That's What Lets Us Handle Every Project With Fresh Energy And Enthusiasm.



ADK INSTRUMENTS
Where Technology Exists

DEEPER SONAR PRO+ 2



Description

Improved and better than ever now with 3 beam frequencies, more crisp and clear visuals, increased GPS performance, a longer lasting battery of up to 9 hours (depending on usage), and scanning depth of up to 100 m.

3 Beam Frequencies

Cover large expanses and locate fish-holding spots faster with the wide angle beam, 47° (100 kHz). Use the mid-angle beam, 20° (240kHz) to drill in on that hotspot you've located. Hone in on your target species with the very detailed, 7° (675kHz) narrow-angle beam.

Built-In GPS

Create lake maps from the boat, kayak, and even the shore, dock, or bank. Just cast out and reel in to start mapping a water body. Your maps are automatically saved to Fish Deeper™ and accessible on any device

Outstanding Depth And Casting Range

Scans down to 330 ft with accuracy and precision. It generates its own Wi-Fi signal (no cellular data needed) to connect to your smart device, so cast out to 330 ft and feel confident there will be rock-solid connectivity.

Excellent Target Separation

With a target separation of 0.4" (narrow beam) and 1" (wide and mid beams), you'll be able to easily pinpoint target species and track even the tiniest lure when vertical jigging.

One sonar for all seasons and fishing types

Kayak/SUP fishing - Installs on your kayak in seconds. No drilling, cables, or batteries are required. Ideal for SUP fishing, it fits comfortably into a hatch or tackle box. Troll and map or cast out to reach those hard-to-access areas.

One sonar for all seasons and fishing types

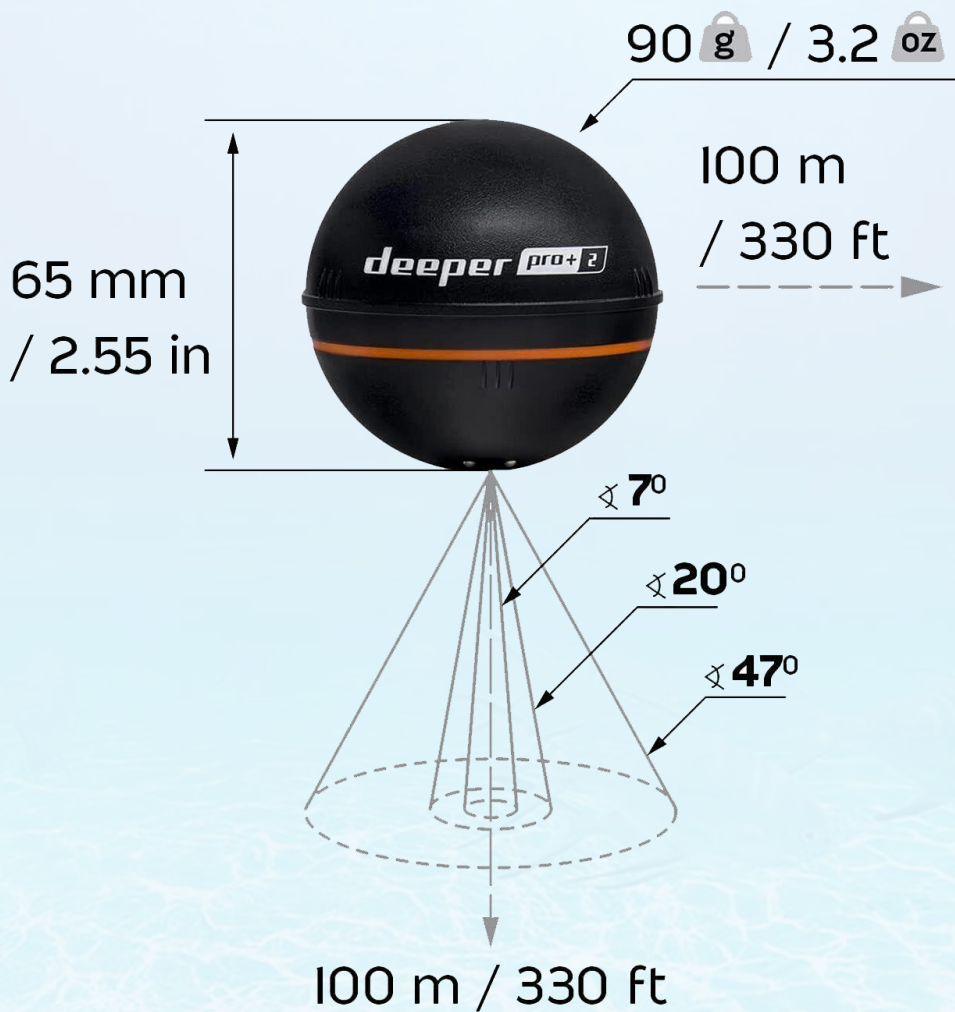
Kayak/SUP fishing - Installs on your kayak in seconds. No drilling, cables, or batteries are required. Ideal for SUP fishing, it fits comfortably into a hatch or tackle box. Troll and map or cast out to reach those hard-to-access areas.

Ice fishing - As an ice fishing flasher, Deeper PRO+ 2 makes hole hopping easier with no transducer or wires. Just drill and drop to see when your target species are about to strike.

Shore fishing - Just cast out your sonar, reel it back in and get the fishing data you need. Locate the fish, find features to target, or map out your lake to get the complete picture.

Specification	Description
Material	ABS enclosure, Titanium inserts
Sonar Type	3 Frequency - Narrow 675 kHz
Target Separation	0.4 in Narrow beam, 1 in Medium beam, 1 in Wide beam
Depth Range	6 in - 330 ft
Sonar Scan Rate	Up to 15 scans per second
Operating temperature	-4°F to 104°F
Temperature sensor	Water surface temperature sensor in Celsius / Fahrenheit
GNSS (Global Positioning Systems Supported)	GPS, GLONASS, Galileo, BeiDou, QZSS
Operating time	Up to 9 hours (depending on usage)
Charging technology	Fast charge, 80% in 45 min., 100% in 75 min.
Internal battery	Li-Ion, 3.7V Rechargeable, 950 mAh
Power Adapter (not included in the box, recommended)	Input 110V/220V. Output Micro USB, 5V 2A
Connection Range	Stable connection up to 330 ft
Connection Type	Wi-Fi
Color	Black

Technical Specifications



DEEPER FISHFINDER START

Description

The Deeper START is our brand new fish finder, ideal for shore anglers who just want to find the fish fast and start catching it. The Deeper START is packed with great features all designed with one purpose in mind: to help you go from guessing to knowing, every time you cast.



Characteristic

● Families

The Deeper START fish finder determines the fish location and bottom vegetation so your kids not only find fish, they learn about science and nature in the process. It creates excitement, gets kids outdoors, and keeps them motivated, while you feel great making your “family time” experience a better one.

● Friends

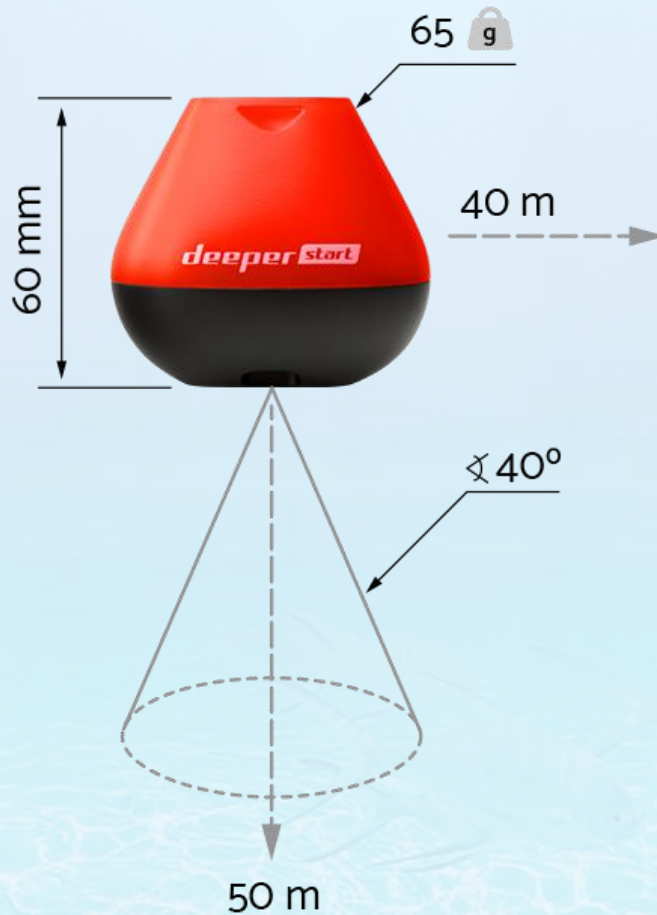
Whether you're a group of two or ten, the Deeper START fish finder helps you find the perfect place to fish so you can spend more time catching, comparing, and chilling with friends. Fish into the night by utilizing the START's automated flashing light. Fishing + friends = Good times.

● Casual Anglers

Whether you're a weekend warrior or out for the occasional “me time” trip, the Deeper START fish finder is perfect for recreational fishing from the dock, shore, or bank. It determines fish location, bottom structure, and vegetation so you spend less time looking and more time catching and relaxing.

Specification	Description
Wi-Fi Range	330 ft / 100 m
Sonar Type	Single beam Frequency (Beam cone) 120 kHz, 40°
Construction Material	ABS
Depth Range	Max/Min Max 165ft / 50 m, Min 1.6ft / 0.5 m
Sonar Scan rate	10 scans per second
Operating Temperature	0°C to 40°C/32°F to 104°F
Internal Battery	Lithium Polymer, 3.7V Rechargeable, 850mAh
Power Supply input (for charging the battery)	5V DC, 650mA max
Power Adapter (not included in the box, recommended)	Input AC 110V/240V. Output Micro USB A, 5V 450mA
Connection type	Wireless Wi-Fi connection 802.11 b/g 2.412GHz 1channel 802.11 b max TX power +20dBm, sensitivity -91dBm 802.11 g max TX power +17dBm, sensitivity -75dBm
Connection Range	Up to at least 165ft / 50m. Range depends on the OS and smartphone model
Battery Life	Up to 6 hours
Charging Time	2.5 hours
Color	Black and Orange

Technical Specifications



DEEPER SONAR CHIRP+ 2

Description

Accurate and reliable Water Level pressure transducer designed for remote monitoring and recording of water level and pressure data in groundwater pumping and sludge tests, stormwater flood analysis, and run-off, as well as surface water irrigation canals, streams, and river gauging.

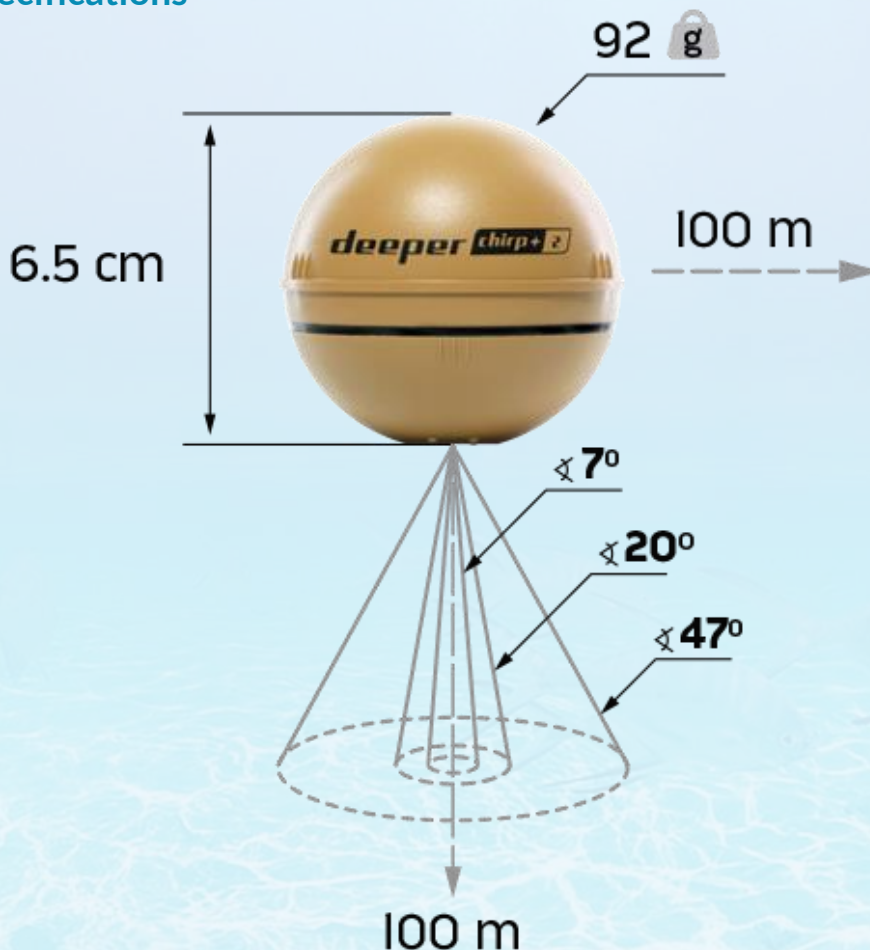


Characteristic

- **Unbelievable Target Separation And Extreme Depths With a target separation of 1cm / 0.4"**, you'll be able to easily pinpoint target species even when they are amongst a school of bait fish or track the tiniest lure when vertical jigging. Surface clutter and noise are minimal, so you can expect precise sonar readings in very shallow water and locate fish as close as 15cm / 6" from the water's surface. To the other extreme, you will be able to distinguish bottom huggers in water as deep as 100m / 330ft.
- **Impressive Casting Range And Easy Portability** Whether you're a group of two or ten, the Deeper START fish finder helps you find the perfect place to fish so you can spend more time catching, comparing, and chilling with friends. Fish into the night by utilizing the START's automated flashing light. Fishing + friends = Good times.
- **3 Beam Frequencies** Discover fish-holding spots faster by scanning an area with the wide angle beam, 47° (100 kHz). Use the mid-angle beam, 20° (240kHz) to drill in on that hotspot you've located. Hone in on your target species with the very detailed, 7° (675kHz) narrow-angle beam
- **One Sonar For All Seasons And Fishing Types** Kayak/SUP fishing - Installs on your kayak in seconds. No drilling, cables, or batteries are required. Ideal for SUP fishing, it fits comfortably into a hatch or tackle box. Troll and map or cast out to reach those hard-to-access areas.
- **Boat fishing** - Ideal for small boats. Cast out or troll from your pontoon, jon boat, inflatable boat, or belly boat. Troll smoothly at a low speed of 3kph / 2mph for accurate sonar readings or cast out to hard-to-reach places. Ice fishing - As an ice fishing flasher, Deeper CHIRP+ 2 makes hole hopping easier with no transducer or wires. Just drill and drop to see when your target species are about to strike.
- **Shore fishing** - Just cast out your sonar, reel it back in and get the fishing data you need. Locate the fish, find features to target, or map out your lake to get the complete picture.

Specification	Description
Material	ABS enclosure, Titanium inserts
Compatibility	iOS 14.0 and later Android 8.0 Oreo and later*
Sonar Type	3 Frequency CHIRP - Narrow CHIRP 675 kHz (cone angle 7°), Medium CHIRP 240 kHz (cone angle 20°), Wide CHIRP 100 kHz (cone angle 47°)
Target Separation	1 cm. / 0.4 in Narrow Chirp, 2.4 cm. / 0.94 in Medium Chirp, 2.4 cm. / 0.94 in Wide Chirp
Depth Range	15 cm / 6 in - 100 m / 330 ft
Sonar Scan Rate	Up to 15 scans per second
Sonar Modes	Onshore, Boat, Ice fishing, Bait Boat, Show Scan Only, Scan Only (without GPS)
Temperature sensor	Integrated temperature sensor (accuracy 0.2°C)
Operating temperature	-20°C to 40°C / -4°F to 104°F
GNSS (Global positioning systems supported)	GPS, GLONASS, Galileo, BeiDou, QZSS
Operating time	GPS ON up to 9 hours, GPS OFF up to 15 hours Fast charge, 80% in 45 min., 100% in 75 min.
Charging technology	Fast charge, 80% in 60 min., 100% in 110 min.
Internal battery	Li-Ion, 3.8V Rechargeable, 1300 mAh
Power Adapter (not included in the box, recommended)	Input 110V/220V. Output Micro USB, 5V 2A
Connection Type	Wi-Fi / Stable connection up to 120 m / 394 ft

Technical Specifications



ACCESSORIES



Description

DEEPER SMARTPHONE MOUNT FOR ANY FISHING ROD

Fitting any type of rod, the Deeper Smartphone Mount is a secure, easy-to-use silicone mount. It enables fishers to monitor the sonar data from their Deeper device while keeping both hands free for reeling in that catch. Main Features: Hands-free usage. The best option for: shore fishing, wading.

Description

DEEPER SONAR FLEXIBLE ARM MOUNT 2.0 FOR BOAT OR KAYAK

Transform your boat, kayak, or float tube into a hi-spec sonar system. Simply attach your Deeper Sonar (3.0, PRO, PRO+, PRO+ 2, CHIRP, CHIRP 2), clamp the flex arm to your vessel, and troll your sonar to create incredible maps or pinpoint your targets.



Description

DEEPER NIGHT FISHING COVER FOR DEEPER SMART SONARS

A transparent cover replacement enabling Deeper sonars to light up whenever the night fishing mode is selected on the Fish Deeper App. Main Features: visibility for night fishing. The best option for: night fishing, is low visibility conditions.





ADK INSTRUMENTS
Where Technology Exists



ADK INSTRUMENTS



Where Technology Exists



PARTNERS WHO SUPPORT US



 www.adkinstruments.in
 enquiry@adkinstruments.in

Support Available 24/7
 +91- 931 024 6652
 +91- 807 763 6490



121/C1, Gk1, Indirapuram
Ghaziabad, UP, INDIA, 201014

